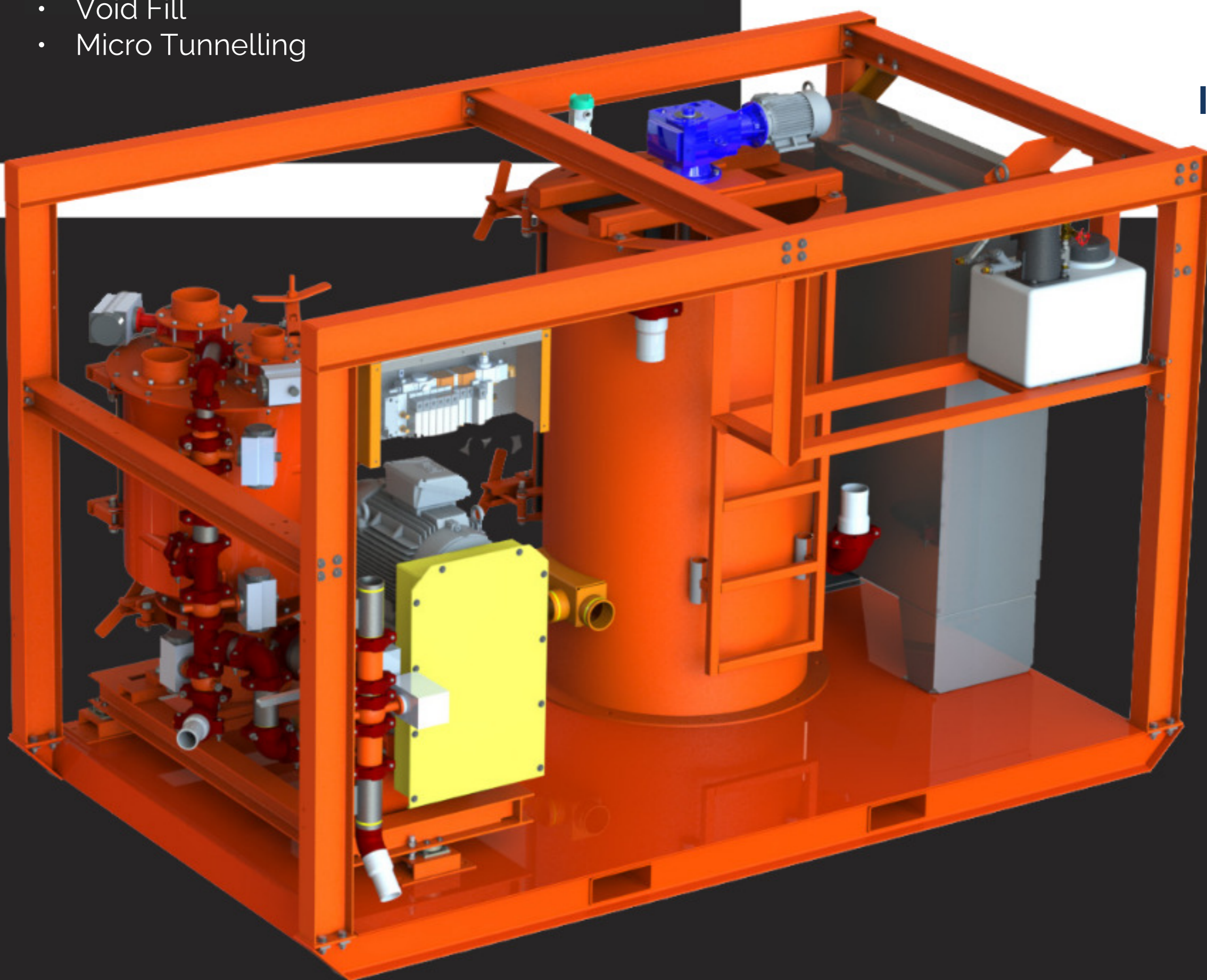


## Description

The AGP-3 Typhoon is an Automated Colloidal Self-Cleaning Grout Mixing Plant that produces consistent, repeatable grout, for Civil, Mining and Tunneling applications, with a low Total Cost of Ownership and quick return on investment.

### Applications for the AGP-3 Grout Mixing Plant:

- Micro Piles
- Soil Nails
- Injection Grouting (Compaction Grouting)
- Underpinning
- Rock Grouting
- Dam Rehabilitation
- Curtain Grouting
- Backfill
- Pipe annular grouting
- Deep Foundations
- Tie Backs and Anchors
- Void Fill
- Micro Tunnelling



# AGP-3 TYPHOON THE PERFECT STORM

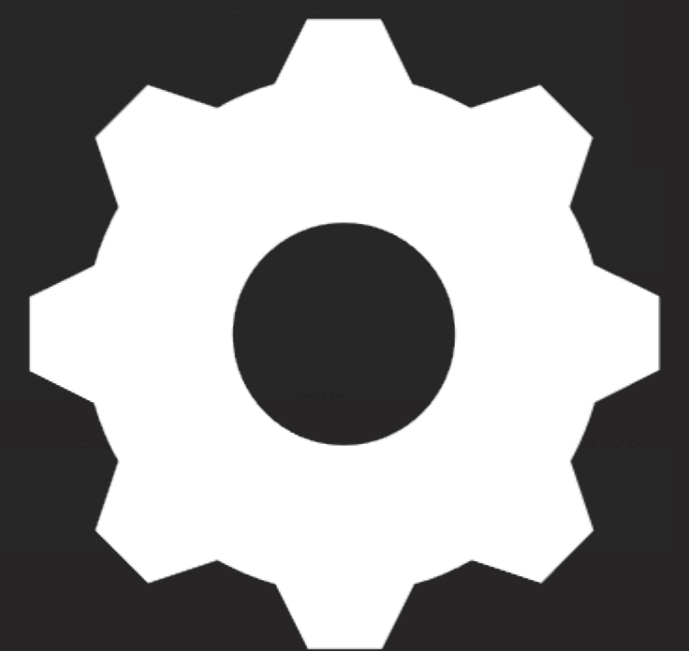
Automated Self-Cleaning  
Colloidal Grout Mixing Plant

## Features/ Advantages

Increased Labor Efficiency ✓

Self Cleaning ✓

Increased Quality Control ✓



Available to rent or Purchase!



# AGP-3 TYPHOON THE PERFECT STORM

## Standard Features

### Frame

- Heavy duty fabricated base frame constructed from structural steel member
- Forklift pockets
- All equipment and components related to the grout plant skid mounted and wired

### Mixer

- AMIX patented colloidal mill and mixing tank
- Self cleaning system
- Access door for cleaning and inspection
- Discharge cone to reduce build up
- Pneumatically actuated valving and groove fittings for easy replacement
- All required valves, controls and other related components to mixer
- Sits on load cells

### Automation

- Complete 30 second self cleaning cycle after every mix
- Automated auger fed loading of dry material from super sac silo, negating manual bag breaking
- All batch data and mix designs recorded for quality control and engineering requirements
- Operated at the push of a button through PLC
- Fully continuous operation, reducing downtime and improving labor efficiency

### Agitation Tank

- 900 litre (238 usg) capacity agitation tank
- Access man-way hatch on side of agitation tank complete with quick release mechanism.
- This can be used to inspect the inside of the tank, for cleaning and maintenance.
- Agitation system c/w TEFC electric motor.
- Continuous level indication system
- Tank Lid designed to automatic switch off motor when lid is open
- All required valves, controls and other related components to agitation tank

### Admixture System

- Positive displacement transfer pump
- Pulse outflow meter
- Required automated control valves
- Required control components
- Discharge line and fittings
- System program fully integrated into mixer

### Bulk Bag Unloader (Super Sac Silo)

- Powder additive bulk bag unloading hopper
- Level indicator to show low level
- Integral bag piercer
- 9 Inch feed screw conveyor
- Dust collection system
- MCC / Control Enclosure Panel
- Weatherproof access cover complete with lock down clasp & open/close cylinders

## Specifications

### Dimensions

- 27'9"L x 8'8"W x 12'3"H

### Mixing Volumes

- .35:1 W/C Ratio = 4 m<sup>3</sup>/hr (18 GPM)
- .45:1 W/C Ratio = 5 m<sup>3</sup>/hr (22 GPM)
- .5:1 W/C Ratio = 6.8 m<sup>3</sup>/hr (30 GPM)
- 1:1 W/C Ratio = 7 m<sup>3</sup>/hr (31 gpm)
- 1.5:1 W/C Ratio = 7.6 m<sup>3</sup>/hr (35 gpm)

### Delivery System

- Hose pump, piston pump, or progressive cavity pump options
- Direct coupled motor TEFC and gear reducer
- Skid mounted
- PLC Controlled
- Max pressures ranging from 150-2000 PSI

### Colloidal Mill

- AMIX style patented colloidal mill
- 29% nickel chrome for less wear
- V-Belt drive
- Gland water feed system

### Power

- 55 KW (75 HP) load generator required
- Plant voltage: 480V / 60Hz / 3Ph

### Control System and PLC Enclosure Panel

- PLC
- Control System Remote Dial-In Access Module & Data Recording
- Motor Control Center (MCC) & Enclosure Panel
- Pneumatic Control System
- Solenoid Valve bank

